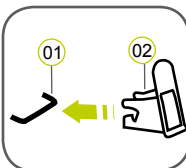


## 5. PREPARATORY WORK

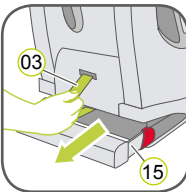
Please read the chapter with your desired installation method in chapter 6 first.

### 5.1 Prepare ISOFIX

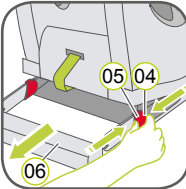


1. If your vehicle is not equipped with the ISOFIX insert guides as standard, clip the two insert guides **02** which are included with the seat\* with the cut-out facing upwards onto the two ISOFIX attachment points **01** of your vehicle.

TIP: The ISOFIX attachment points are located between the surface and the backrest of the vehicle seat.



2. Move the head restraint on the vehicle seat to the upper position.
3. Pull the grey fabric loop **03** to pull out both locking arms **15** until you hear a click sound which indicates they are fully engaged.



4. On both sides of the seat squeeze the green safety button **04** and the red release button **05** together and remove the connector protection **06**.

\* The insert guides make it easier to install the child safety seat with the aid of the ISOFIX attachment points and prevent damage to the seat covering. When not in use, they should be removed and stored in a safe place. On vehicles with a folding backrest the insert guides must be removed before the backrest is folded.

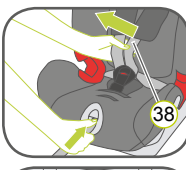
Any problems which occur are usually caused by dirt or foreign objects on the insert guides and on the hooks. Clean off any dirt or foreign objects to remedy this type of problem.

### 5.2 Adjusting the headrest in 5-point harness installation



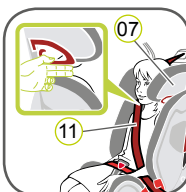
A correctly adjusted headrest **07** ensures optimal protection for your child in the safety seat: The headrest **07** must be adjusted so that the shoulder belts **08** are at the same level as your child's shoulders.

**CAUTION!** The shoulder belts **08** must not run behind the back of the child or at ear height or above the ears.



- The shoulder belts are adjusted as follows:**
1. Loosen the 5-point harness **38** of the child seat as much as possible.
  2. Press the button of the shoulder belt height adjuster **10** at the rear of the seat shell and tilt the shoulder belt height adjuster **10** towards you.
  3. Slide the shoulder belt height adjuster **10** to select the correct height of the shoulder belts **08** and engage it in the position that fits for your child by releasing the button.

### 5.3. Adjusting the headrest in vehicle belt installation

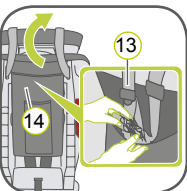


A correctly adjusted headrest **07** ensures that the diagonal seat belt section **11** is optimally positioned, and gives your child the optimal protection. The headrest **07** must be adjusted so that there is a space two fingers wide between the headrest **07** and your child's shoulders.

- To adjust the height of the headrest to fit your child:**
1. Squeeze the adjustment handle **12** on the back of the headrest **07**. This unlocks the headrest.
  2. You can now move the unlocked headrest **07** to the desired height. As soon as you release the adjustment handle **12** the headrest **07** will lock into place.
  3. Place the child seat on the vehicle seat.
  4. Have your child sit down in the child seat and check the height. Repeat this process until the headrest **07** is at the optimal height. If in the lowest position the headrest **07** is still too high, additional adjustment can be made through the shoulder belt height adjuster **10**, as explained in section 5.2

## 6. INSTALLATION

### A GROUP 1 (9-18 kg) & GROUP 2 (15-25 kg) With ISOFIT + Top Tether + Vehicle belt + 5-Point Harness



1. Make sure that the child seat's 5-point harness is installed correctly and the SecureGuard is NOT installed (see section 10).
2. Follow the steps in section 5.1
3. Follow the steps in section 5.2
4. Make sure the Top Tether **13** lies over the child seat. If not, take the Top Tether **13** from the storage bag **14** and lay it over the child seat.
5. Place the child seat facing in the direction of travel on the vehicle seat.
6. Grasp the child seat with both hands and slide the two locking arms **15** firmly into the insert guides **02** until the locking arms engage with a clicking noise on both sides. The green safety button **04** must now be visible on both sides.

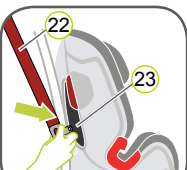
**CAUTION!** The locking arms are only correctly engaged if both of the safety buttons **04** are completely green.



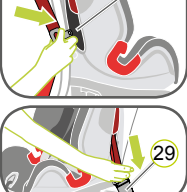
7. Push the child seat towards the backrest applying firm, even pressure on both sides.



8. Shake the child safety seat to make sure it is safely attached and re-check the green safety buttons **04** to make sure that both of them are completely green.



9. Pull the Vehicle belt **22** out and guide it through the belt guides **23** of the child seat. Make sure that the belt is not twisted.



10. Engage the buckle tongue in the vehicle seat buckle **29** this should make a click noise.



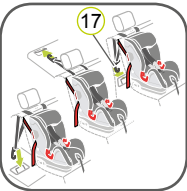
11. On the side opposite the car seat belt buckle, insert diagonal belt in dark red belt guide **25**.
12. Apply your body weight to the child seat (kneel into the seat). At the same time pull the diagonal belt strongly to tighten upwards.



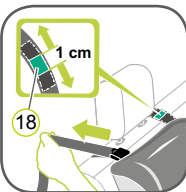
13. Remove body weight from child seat and re-tension by pulling the diagonal belt **11**.



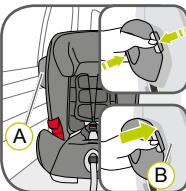
14. Take the Top Tether **13** and press the metal tongue **16** away from the strap to lengthen the strap and pull the Top Tether **13** by the snap hook **17** until it makes a V-shape.
15. Route the Top Tether **13** on the left and right hand sides of the vehicle headrest.



16. Hook the snap hook **17** into the Top Tether anchoring point recommended in your vehicle owner's guide.
- CAUTION!** Be sure not to use the luggage hook instead of the Top Tether point. Check your vehicle and look for this sign:



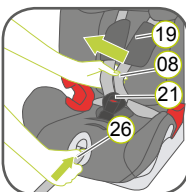
17. To Tension the Top Tether **13** remove the slack by pulling the free end of the belt through the metal tongue **16**, equalising the strap tension on both sides. The Top Tether is correctly tensioned when the green tension indicator **18** is extended by 1 cm.



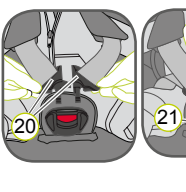
- ADVANSAFX II SICT:**
19. Press the SICT **(A)** into both SICT fastening points **(B)** on the side of the child seat nearest the vehicle door and clip in the SICT **(A)**.
- CAUTION!** Make sure that there is a gap of approximately 5 mm between the SICT **(A)** and the vehicle door in order to avoid pressure marks and other damage to the door trim.

### SECURING YOUR CHILD WITH 5-POINT HARNESS

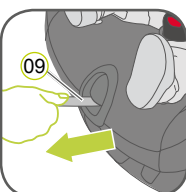
The more snugly the harness fits over your child's body, the better your child will be protected. Therefore avoid putting thick clothes on your child under the belt.



1. Open the harness buckle **21** (press red button)
2. Press the adjusting button **26** and at the same time pull both shoulder belts **08** forwards. Do not pull on the shoulder pads **19**.
3. Have your child sit down in the child seat.



4. Make sure that your child's back lies flat against the backrest of the child seat.
5. Guide the two buckle latches **20** together and engage them before putting them into the harness buckle **21** - this should make a click noise.



6. Pull shoulder straps **11** to remove all slack from the lap section ensuring the harness lies flat.
  7. Pull on the adjuster strap **09** until the harness lies flat and is close against your child's body.
- CAUTION!** Pull the adjuster strap **09** straight (not upwards or downwards).



8. Pull down on the shoulder pads **19** to ensure they are correctly positioned.

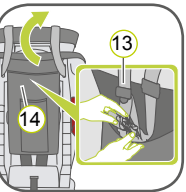
**CAUTION!** For the safety of your child, before every journey in the car check that...

- the child safety seat is engaged on **both** sides with the ISOFIT locking arms **15** in the ISOFIX attachment points **01** and that both green safety buttons **04** are completely green;
- the child seat is firmly installed in the vehicle;
- the SICT **(A)** is correctly installed and used (only ADVANSAFX II SICT).

- the belt is not twisted;
  - the Top Tether **13** is tightly tensioned over the backrest of the car seat and the tension indicator **18** is green;
  - the diagonal belt runs through the dark red belt guide **25**;
  - the straps of the child safety seat are close to the body without constricting the child;
  - the shoulder belts **08** are correctly adjusted and the straps are not twisted;
  - the shoulder pads **19** are at the same level as your child's shoulders;
  - the buckle latches **20** are engaged in the harness buckle **21**;
- CAUTION:** If your child attempts to open the green safety buttons **04** or the harness buckle **21**, make sure to stop at the earliest opportunity. Check that the child safety seat is correctly attached and make sure that your child is properly secured. Teach your child about the dangers involved.

To remove the child seat follow the steps in section 8

### B GROUP 2 (15-25 kg) & GROUP 3 (22-36 kg) With ISOFIT + Top Tether + Vehicle belt

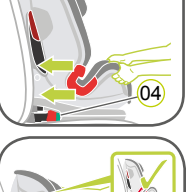


1. Make sure that the child seats 5-point harness is removed and the SecureGuard is installed correctly (see section 09)
2. Follow the steps in section 5.1
3. Follow the steps in section 5.3
4. Make sure the Top Tether **13** lies over the child seat. If not, take the Top Tether **13** from the storage bag **14** and lay it over the child seat.
5. Place the child seat facing in the direction of travel on the vehicle seat.
6. Grasp the child seat with both hands and slide the two locking arms **15** firmly into the insert guides **02** until the locking arms engage with a clicking noise on both sides. The green safety button **04** must now be visible on both sides.

**CAUTION!** The locking arms are only correctly engaged if both of the safety buttons **04** are completely green.



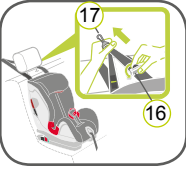
7. Push the child seat towards the backrest applying firm, even pressure on both sides.



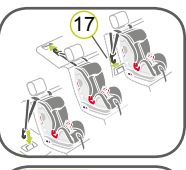
8. Shake the child safety seat to make sure it is safely attached and re-check to the green safety buttons **04** to make sure that both of them are completely green



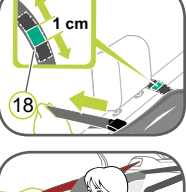
9. Take the Top Tether **13** and press the metal tongue **16** away from the strap to lengthen the strap and pull the Top Tether **13** by the snap hook **17** until it makes a V-shape.
10. Route the Top Tether **13** on the left and right hand sides of the vehicle headrest.



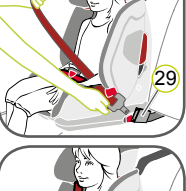
11. Hook the snap hook **17** into the Top Tether anchoring point recommended in your vehicle owner's guide.
- CAUTION!** Be sure not to use the luggage hook instead of the Top Tether point. Check your vehicle and look for this sign:



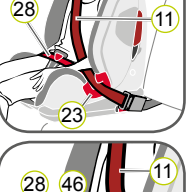
12. To Tension the Top Tether **13** remove the slack by pulling the free end of the belt through the metal tongue **16**, equalising the strap tension on both sides. The Top Tether is correctly tensioned when the green tension indicator **18** is extended by 1 cm.



13. Have your child sit down in the child seat.
14. Pull out the vehicle seat belt and guide it in front of your child to the vehicle seat buckle **29**.
15. Engage the buckle tongue in the vehicle seat buckle **29** CLICK!



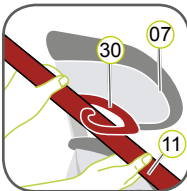
16. Place the diagonal seat belt section **11** and lap belt section **28** on the side of the vehicle seat belt buckle **29** under the armrest and into the light red belt guide **23** of the child seat.
- CAUTION!** The vehicle seat belt buckle **29** must not be positioned between the light red belt guide **23** and the armrest.



17. Place the lap belt **28** in the light red SecureGuard **46**.
- CAUTION!** Do not place the diagonal seat belt section **11** in the light red SecureGuard **46**.



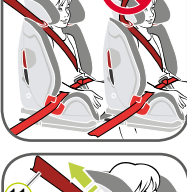
18. Place the lap belt section **28** on the other side of the child seat in the light red belt guide **23**.
- CAUTION!** The lap belt section **28** must lie as low as possible over your child's hips on both sides



19. Guide the diagonal seat belt section **11** into the dark red belt holder **30** of the headrest **07** until it lies completely in the belt holder **30** and is not twisted.
- TIP!** If the backrest **31** conceals the belt holder **30**, you can adjust the headrest **07** upwards. The diagonal seat belt section **11** can now be easily inserted. Now return the headrest **07** to the proper height, as in Section 5.3.



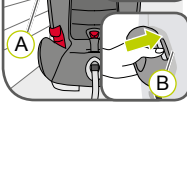
20. Make sure that the diagonal seat belt section **11** runs over your child's shoulder bone, and not in front of his or her neck.
- TIP!** You can still adjust the height of the headrest **07** again here in the vehicle.



**CAUTION!** The diagonal seat belt section **11** must run diagonally backward. You can adjust the course of the belt with your vehicle's adjustable belt deflector.



**CAUTION!** The diagonal seat belt section **11** must never lead forward to the vehicle's belt deflector. In this case, only use the child seat on the rear seat.



- ADVANSAFX II SICT:**
22. Press the SICT **(A)** into both SICT fastening points **(B)** on the side of the child seat nearest the vehicle door and clip in the SICT **(A)**.
- CAUTION!** Make sure that there is a gap of approximately 5 mm between the SICT **(A)** and the vehicle door in order to avoid pressure marks and other damage to the door trim.

**CAUTION!** For the safety of your child, before every journey in the car check that...

- the child safety seat is engaged on **both** sides with the ISOFIT locking arms **15** in the ISOFIT attachment points **01** and that both green safety buttons **04** are completely green;
- the child safety seat is securely fastened;
- the SICT **(A)** is correctly installed and used (only ADVANSAFX II SICT).
- the Top Tether **13** is tightly tensioned over the backrest of the car seat and the tension indicator **18** is green;
- the lap belt section **28** runs through the light red belt guides **23** on both sides of the seat cushion;
- the diagonal seat belt section **11** runs through the dark red belt holder **30** of the headrest;
- the diagonal seat belt section **11** runs diagonally backward,
- the straps are tight and **not** twisted;
- the vehicle seat belt buckle **29** is **not** positioned between the light red belt guide **23** and the armrest of the seat cushion.

**CAUTION!** If your child attempts to open the safety buttons **04** or the harness buckle **21** or is trying to put the diagonal seat belt section **11** in the light red SecureGuard **46**, make sure to stop at the earliest opportunity. Check that the child safety seat is correctly attached and make sure that your child is properly secured. Teach your child about the dangers involved.

To remove the child seat follow the steps in section 8

## 7. CARE INSTRUCTIONS

**CAUTION!** To ensure the full protective effect of the child safety seat:

- In the event of an accident with an impact speed above 10 km/h it is possible that the child safety seat may have been damaged, but that the damage may not be immediately obvious. In this case the child safety seat must be replaced. Please dispose of it properly.

- Regularly check all important parts for damage. Make sure that the mechanical components in particular are all in perfect working order.
- To prevent damage, ensure that the child safety seat does not become jammed between hard objects (car door, seat runners etc.).
- Always have the child safety seat checked if it has been damaged (e.g. if it is dropped).
- Never lubricate or oil parts of the child seat.
- In order to properly protect your baby, it is imperative that you install and use the ADVANSAFX II / ADVANSAFX II SICT exactly as described in this manual.

Disposal of packaging	Container for cardboard
Cover	Residual waste, thermal utilisation
Plastic parts	In accordance with the labelling in the designated container
Metal parts	Container for metals
Harness straps	Container for polyester
Buckle & latch	Residual waste

## 8. REMOVAL OF THE CHILD SEAT

**CAUTION!** Remove the child seat from the vehicle. The child seat must never be transported in the car if it is not properly secured.

**Detach/Reattach SICT**

To detach the SICT **(A)**, press both SICT fastening points **(B)** and remove the SICT **(A)**. The SICT **(A)** can now be reattached to the product.

- Group 1 and Group 2 (ISOFIT, Vehicle belt & Top Tether)**
1. To release the ISOFIT fastening, squeeze the green safety button and the red release button together, first on one side, then on the other.
  2. Open the buckle of the vehicle seat belt and take the diagonal belt out.
  3. To release the TopTether anchoring loosen the belt by lifting the metal tongue of the adjuster away from the belt. Then take the spring hook out of the anchoring point.
  4. Slide the ISOFIT locking arms back into the seat shell and put the connector protection on the ISOFIX.

- Group 2 and Group 3 (ISOFIT & Top Tether)**
1. Release vehicle seat buckle if securing the child seat.
  2. To release the ISOFIT fastening, squeeze the green safety button and the red release button together, first on one side, then on the other.
  3. To release the TopTether anchoring loosen the belt by lifting the metal tongue of the adjuster away from the belt. Then take the spring hook out of the anchoring point.
  4. Slide the ISOFIT locking arms back into the seat shell and put the connector protection on the ISOFIX.



## 1. GENERAL SAFETY NOTES

**⚠ Take the time to carefully read through these instructions, and always keep them ready to hand in the designated pocket on the child seat.**

### ⚠ For the protection of all vehicle occupants

In the case of an emergency stop or an accident, persons or objects which are not properly secured in the car can cause injury to other vehicle occupants. For this reason, please always check that:

- the backrests of the vehicle seats are locked (e.g. that the latch on a folding rear seat bench is engaged).
- all heavy or sharp-edged objects in the vehicle (e.g. on the parcel shelf) are secured.
- all persons in the vehicle have their seat belts fastened.
- the child safety seat is always secured in the car via the ISOFIX anchoring, the Top Tether and the 3-point belt (Vehicle belt), even when there is no child in the seat.

### ⚠ For the protection of your child

- The more snugly the harness fits over your child's body, the safer your child will be.
- Please do not ever leave your child unattended in the child safety seat in the vehicle.
- Use on the rear seat:
  - Move the front seat forward far enough that you child's feet cannot hit the backrest of the front seat (to prevent risk of injury).
- The child safety seat can get hot in direct sunshine. **Caution:** Children's skin is delicate and could be injured as a result. Protect the child seat against intensive direct sunlight when it is not currently in use.
- Only allow your child to enter and exit the vehicle on the pavement side.
- Make stops during longer journeys to give your child an opportunity to run about and play.

### ⚠ To protect your vehicle

Some vehicle seat coverings made of more delicate materials (e.g. velour, leather, etc.) may develop wear marks when child seats are used. For optimum protection of your seat covers, we recommend using the BRITAX Car Seat Protector, which is available from our range of accessories.

## 2. USE IN THE VEHICLE

Please observe the instructions on the use of child restraint systems described in your vehicle owner's manual.

The seat may be used in vehicles equipped with ISOFIX, Top Tether anchoring systems and 3-point belt (see type list). Please consult your vehicle owner's manual for information about the ISOFIX & Top Tether anchoring points and the installation with 3-point belt. Also check your vehicle owner's manual for seats which are approved for child safety seats in the weight classes 9-18 kg, 15-25 kg, 22-36 kg.

You can use your child car seat as follows:

In the direction of travel	Yes
Against the direction of travel	No <sup>1)</sup>
with 2-point belt (Vehicle belt)	NO
On seats featuring: ISOFIX attachments (between seat surface and backrest), Top Tether anchoring points (for example on the parcel shelf, on the floor or behind the backrest) and 3-point belt (Vehicle belt)	Yes <sup>2) 3)</sup>

(Please observe the applicable regulations in your country)

- 1) Use is permitted on a rearward-facing vehicle seat (e.g. in a van or minibus) only if the vehicle seat is also approved for use by adults. The seat must not be positioned anywhere where it is in range of an airbag which is being deployed.
- 2) The safety belt must be approved to ECE R 16 or a comparable standard (see test label on belt with an "E" or "e" in a circle).
- 3) If there is a front airbag: Slide the passenger seat a long way back and refer to any instructions in vehicle owner's manual.

## 3. APPROVAL

BRITAX child safety seat	Tested and certified according to ECE* R 44/04	
	Group	Body weight
ADVANSAFIX II / ADVANSAFIX II SICT	1	9 to 18 kg
	2	15 to 25 kg
	3	22 to 36 kg

\*ECE = European Standard for Child Safety Equipment

The child safety seat has been designed, tested and certified according to the requirements of the European Standard for Child Safety Equipment (ECE R 44/04). The test mark E (in a circle) and the certification number are located on the orange certification sticker (sticker on the child safety seat).

- This certification will be invalidated if you make any modifications to the child safety seat.
- The ADVANSAFIX II / ADVANSAFIX II SICT child safety seat must only be used to secure your child in the vehicle. It must never be used as a seat or toy in the home.

### Risk of injury due to unauthorised modifications!

Unauthorised technical modifications may reduce or entirely void the seat's protective properties.

- Do not make any technical modifications to the child seat.
- Use the child seat only as described in these user instructions.

The ADVANSAFIX II / ADVANSAFIX II SICT is approved for one method of installation:

Group	Installation method	Child installation	User Guide chapter
1 (9-18 kg)	ISOFIT + TopTether + Vehicle belt	with 5-point harness	A
2 (15-25 kg)	ISOFIT + TopTether + Vehicle belt	with 5-point harness	A
2 (15-25 kg)	ISOFIT + TopTether	Vehicle belt	B
3 (22-36 kg)	ISOFIT + TopTether	Vehicle belt	B

## 4. CARE AND MAINTENANCE

### Care for the harness buckle

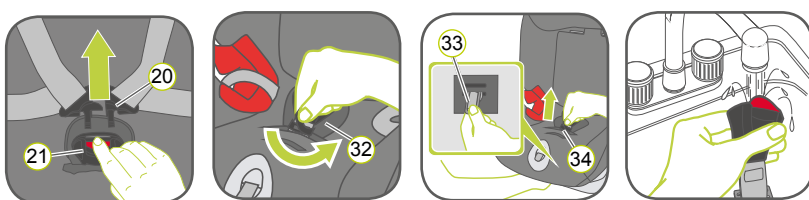
It is vital for the safety of your child that the harness buckle works correctly. Malfunctions of the harness buckle are usually caused by accumulations of dirt or foreign bodies. Malfunctions are as follows:

- The buckle latches are ejected only slowly when the red release button is pressed.
- The buckle latches will no longer lock home (i.e. they are ejected again if you try to push them in).
- The buckle latches engage without an audible „click“.
- The buckle latches are difficult to insert (you feel resistance).
- The buckle only opens if extreme force is applied.

### Remedy

wash out the harness buckle so that it functions properly once again:

### Cleaning the harness buckle



1. Open the harness buckle (21) (press the red button).
2. Open the Velcro fastener on the crotch pad (32) and take off the crotch pad from the cover.
3. Put the seat shell into the recline position
4. Grasp the metal plate (33) from underneath and turn it into a vertical position
5. Slide the metal plate (33) through the slot (34)
6. Remove the harness buckle (21)
7. Soak the harness buckle (21) in warm water with washing-up liquid for at least an hour
8. Then rinse and dry it thoroughly.

### Cleaning

**⚠ CAUTION** Please be sure to use only genuine Britax replacement seat covers, as the seat cover is an integral part of the child safety seat which plays an important role in ensuring that the system works properly. Replacement seat covers are available from

your retailer.

**⚠ CAUTION!** The child seat must not be used without its cover.

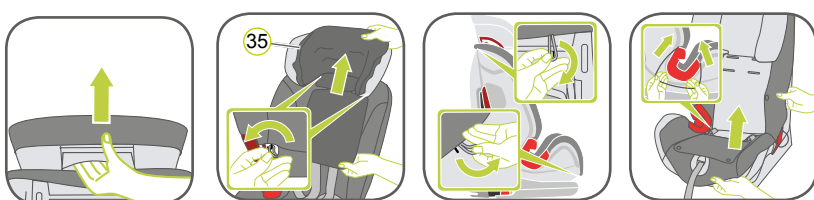
- The cover can be removed and washed with a mild detergent using the washing machine's cycle for delicate items (30 °C). Please observe the instructions on the washing label of the cover.
- The plastic parts (including the SecureGuard) can be cleaned using soapy water. Do not use harsh cleaning agents (such as solvents).
- The harnesses can be washed in lukewarm soapy water.

**⚠ CAUTION!** Never remove the buckle latches (20) from the straps.

- The shoulder pads can be washed in lukewarm soapy water.

### Removing the cover

#### A) Headrest



1. Move the headrest of the child seat to the upper position.
2. Take the elastic seam of the cover (35) from the hooks at the back side of the headrest and remove the cover of the headrest.

#### B) Cover

1. Undo the hooks on the bottom side.
2. Undo the hooks located on the upper back side.
3. Undo the elastic loop on both sides of the belt guides.
4. Open the two plastic fasteners on the back side of the cover.
5. Remove the cover.

### Re-fitting the Cover:

Simply follow the steps in the opposite order.

**⚠ CAUTION!** Never use the child seat in installation method A without a correct installed buckle. Make sure that the metal plate (33) is correctly attached.

**⚠ CAUTION!** Check that the harness straps are not twisted and that they have been correctly inserted in the belt slots on the cover.

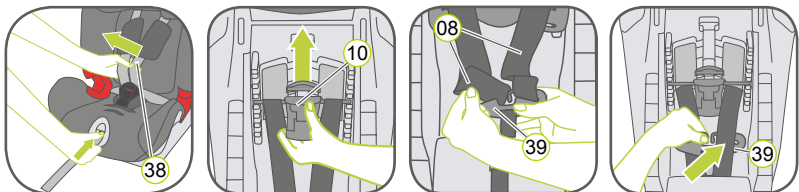
BRITAX RÖMER  
Kindersicherheit GmbH  
Blaubeurer Straße 71  
D-89077 Ulm  
Germany

t: +49 (0) 731 9345-199/-299  
f: +49 (0) 731 9345-210  
e: service.de@britax.com  
www.britax.com

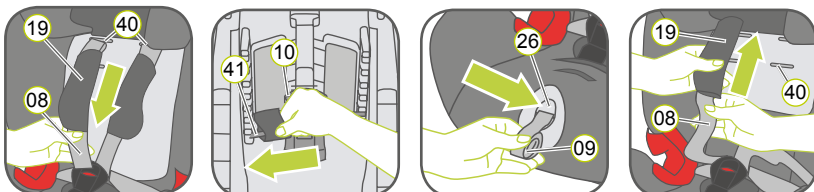
BRITAX EXCELSIOR LIMITED  
1 Churchill Way West  
Andover  
Hampshire SP10 3UW  
United Kingdom

t: +44 (0) 1264 333343  
f: +44 (0) 1264 334146  
e: service.uk@britax.com  
www.britax.com

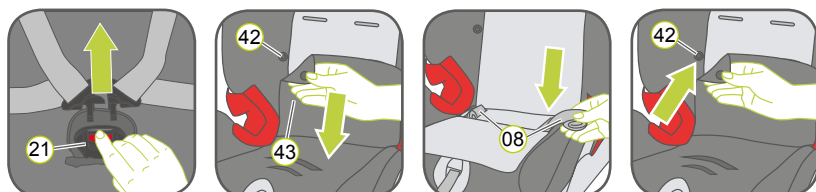
## 09. REMOVING THE 5-POINT HARNESS& & REFITTING THE SECUREGUARD



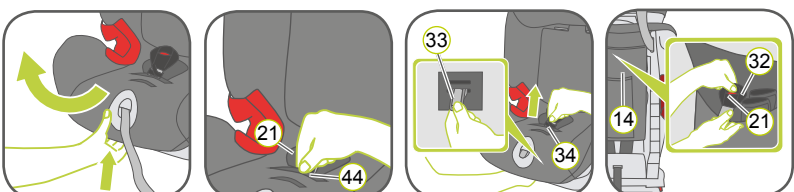
1. Put the storage bag (14) forward over the seat.
2. Loosen the 5-point harness (38) of the child seat as much as possible.
- Back side of the child seat:**
3. Press the button of the shoulder belt height adjuster (10) at the rear of the seat shell and tilt the shoulder belt height adjuster (10) towards you.
4. Move the shoulder belt height adjuster (10) into the top position and fix the position by releasing the button of the shoulder belt height adjuster.
5. Loosen the 5-point harness (38) of the child seat as much as possible. Unhook the shoulder belts (08) on the back side of the child seat from the connecting piece (39).
6. Snap the connecting piece (39) in the provided storage.



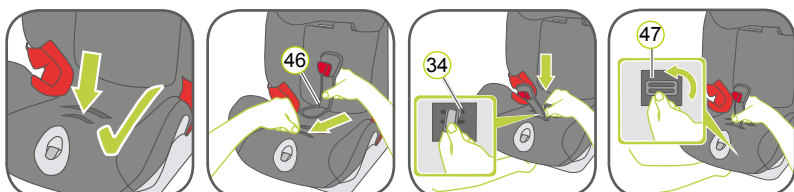
7. Pull below both, the shoulder pads (19) and the two shoulder belts (08) to the front through the slots (40) (front side of the child seat).
8. Slide the belt loops off of the plastic extensions (41) of the shoulder belt height adjuster (10).
- Front side of the child seat:**
9. Pull out the adjuster strap (09) as far as possible.
10. Store the adjuster strap in the adjuster housing (26).
11. Pull the shoulder pads (19) through the slots (40) to the front.
12. Remove the shoulder pads (19) from the shoulder belts (08) and put them in the storage bag on the rear of the seat.



13. Open the harness buckle (21) (press the red release button)
14. Lift the lower part of the rear cover to the top and place it over the headrest.
15. Open the left and right poppers (42) on the lower part of the cover (43) and lift the cover piece to the front. Slide the buckle latches (20) down into the storage compartments.
16. Roll the shoulder belts (08) together and place them also into the storage compartments.
17. Reposition the two cover parts to the rear and lock the poppers (42) on the left and right side of the cover back side.

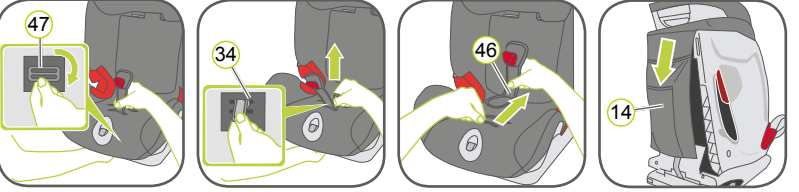


18. Lift the recline handle and pull at the front to fully recline the child seat.
19. Pull the elastic strip (44) over the harness buckle (21).
20. Grasp the metal plate (33) from underneath and turn it into a vertical position.
21. Push upwards and slide the metal plate (33) through the slot (34).
22. Remove the harness buckle (21) with the crotch pad (32) and store it in the storage bag (14).

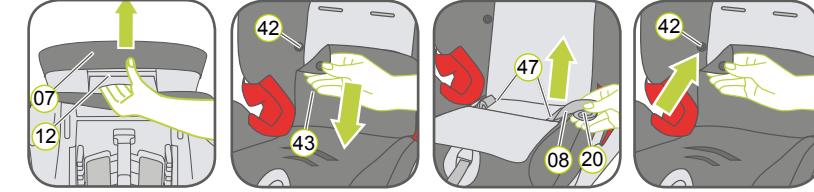


23. Take the SecureGuard (46) from the storage bag and hold the metal plate (47) vertically. Push it with the narrow side upwards through the belt slot (34) closest to you into the seat shell from above.
24. Ensure by looking underneath the seat that the SecureGuard metal plate (47) is in a horizontal position and check the installation by pulling on the SecureGuard (46) several times.

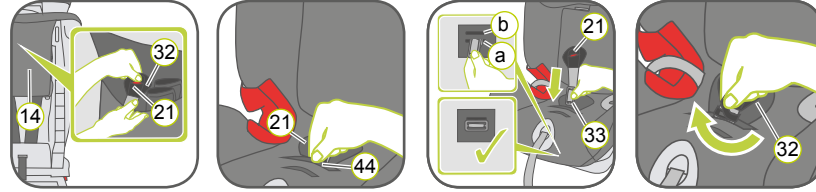
## 10. REFITTING THE 5-POINT HARNESS & REMOVING THE SECUREGUARD



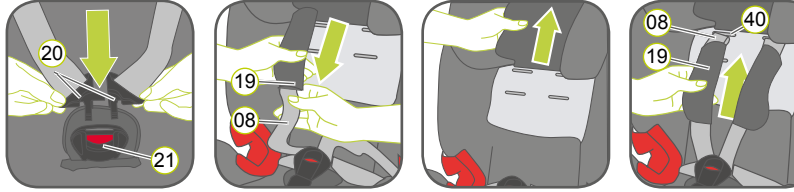
1. Grasp the SecureGuard metal plate (47) from underneath and turn it into a vertical position.
2. Push upwards and slide the metal plate (47) through the slot (34).
3. Remove the SecureGuard (46) and store it in the storage bag (14).



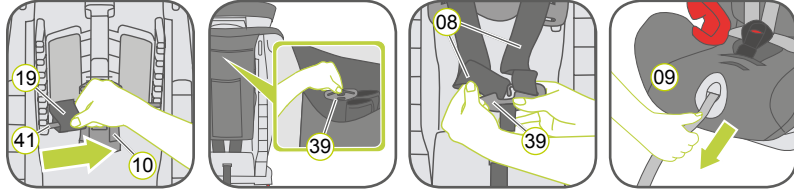
4. Squeeze the adjustment handle (12) at the rear of the headrest (07) and push the headrest into the lowest position.
5. Release the adjustment handle (12) to lock into place.
6. Lift the lower part of the headrest cover and place it over the headrest
7. Open the left and right buttons on the lower part of the cover (43) and lay the cover piece on the seating area.
8. Take the shoulder belts (08) and the buckle latches (20) from the storage compartment (47) and unroll the shoulder belts.
9. Fold back the two cover pieces and close the left and right poppers (42) on the lower part of the cover.



- Should the child seat not be in the most reclined position:  
Press the recline handle so that the seat is in its most upright position.
10. Lift the harness buckle (21) and the shoulder pads (19) from the storage bag (14) on the back side of the seat.
  11. Refitting harness buckle (21) and crotch pad (32): pull the elastic strip (44) in the seating area towards you. Use the belt slot closest to the backrest (a).
  12. Take the harness buckle (21) and hold the metal plate (33) vertically. Push it with the narrow side upwards through the belt slot (a) to the seat shell from above.
  13. Ensure by looking underneath the seat that the metal plate (33) is in a horizontal position and check the installation by pulling on the harness buckle (21) several times.
  14. Guide the two buckle latches (20) together and engage them before putting them



- into the harness buckle (21) - this should make a click noise.
- ⚠ CAUTION!** The lap belts must not be twisted or swapped.
15. Thread the shoulder pads (19) onto the shoulder belts (08) in the correct orientation as shown ensuring there are no twists. Align the two loops of the shoulder belts (08) and strap loops of the shoulder pads (19).
  16. Pull the shoulder belts (08) and the strap loops of the shoulder pads (19) through the slots (40).
- Tip: Fold up the rear cover part.



17. Pull the strap loops of the shoulder pads (19) onto the plastic extensions (41) of the shoulder belt height adjuster (10). Tip: the strap loops of the shoulder pads should be the lower loop.
18. Fold the upper part of the cover downwards.
- ⚠ CAUTION!** The shoulder belts (08) must not be twisted or swapped.
19. Take the connecting piece (39) from the provided storage on the back side of the child seat.
20. Hook the shoulder belts (08) back onto the connecting piece (39). The left loop on the left arm of the connecting piece and the right loop on the right arm.
21. Pull slowly on the adjustment strap (09) and at the same time push the connecting piece (39) between backrest and the provided storage of the connecting piece.

9 – 36 kg  
9 m ~ 12 y

britax

ADVANSAFIX II  
ADVANSAFIX II SICT

User instructions



www.britax.com